

CATALOGUE



The Lighting Company
The Future Company
www.dgr.com.my



LED TUBE

D'TL2 LED TUBE



The Lighting Company

LED TUBE LIGHTING SERIES

SPECIFICATION

FAMILY NAME: LEMNIS TL2 1200

CORRELATED COLOUR TEMPERATURE: 3500K / 4000K / 5000K / 6500K

PRODUCT CODE: 2R3MEB / 2R4MEB / 2R2MEB / 2RCMEB

lemnis
lighting | asia

ELECTRICAL SPECIFICATION:

Rated Power (W) : 18
Rated voltage (Vac) : 230
Voltage range (Vac) : 198~264
Rated Current (mA, @230Vac) : 88
Power consumption (W, @230Vac) : 18
Frequency (Hz) : 50/60
Power Factor (w and w/o EM) : 0.9
Protection against over voltage : YES (by fuse)

OPTICAL SPECIFICATION:

Lumen output (lm) : 1820/1930/2050/2050
Color rendering index (CRI) : >94
Efficacy (lm/W, @5000K CCT) >110
Beam Angle (°) : 165
Dimmable : NO
SP Ratio : 1.8/1.9/2.0/2.2
EVE* : 2910/3225/3570/3945
Light Sources : only Red and Green LED. No phosphors .

ENVIRONMENTAL SPECIFICATION:

Operating temperature(°C): -20°C to 40°C
Storage temperature (°C) : -30°C to 55°C
Operating Humidity (%) : 10 % to 80 %
Life span (h) : 50,000@ L85B15

MECHANICAL SPECIFICATION:

Housing : Painted glass tube for stable transmissivity
Heat sink material : Aluminium
IP rating : IP20
Length (mm) : 1,200mm
Diameter (mm) : 26mm (28.7max per IEC std)
Weight (Kg) : 0.39
Lamp Base : G13

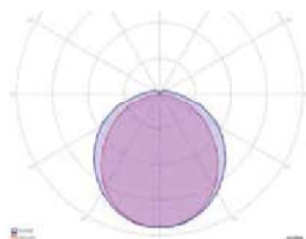
STANDARDS AND APPROBATIONS:

Safety requirements – General : EN61347-1 EN60598-1
Particular requirements - AC/ DC converter for LED : EN61347-2-13
Safety requirements – LED module : EN62031
Safety –Photobiological : EN62471
Safety - Double capped fluorescent lamp : EN61195
EMC - RFI : CISPR-15
EMC - Immunity : EN61547
CE Certification : YES
CB Test Report Certification : YES
RoHS : YES
Environmentally safe : No lead, mercury or wolfram
Approbation marking : CE, RoHS, recycle bin, TISI, C-Tick

*Enhanced Visual Efficiency (EVE) is based on recommendation IES TM 24-13 which is calculated as follows: Photopic lumen x S/P Ratio^0.8

PHOTOMETRIC DATA

Polar Curve (TL2 1200 5000K)



DML GLOBAL RESOURCES SDN BHD (875817-D)

NO.43, JALAN BP 6/2, BANDAR BUKIT PUCHONG, 47100 PUCHONG, SELANGOR DARUL EHSAN, MALAYSIA.

TEL : 011 1533 2886 FAX: +603 8051 3783 WEBSITE: www.dgr.com.my

Email: sales@dgr.com.my

D'TL2 LED TUBE

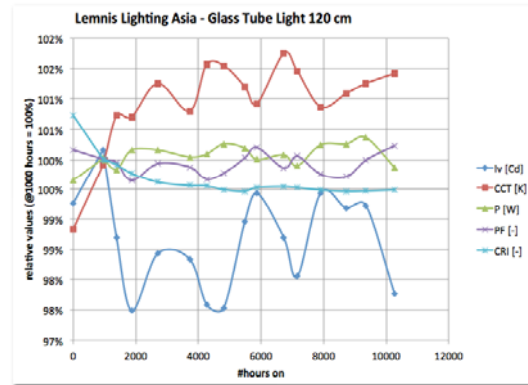
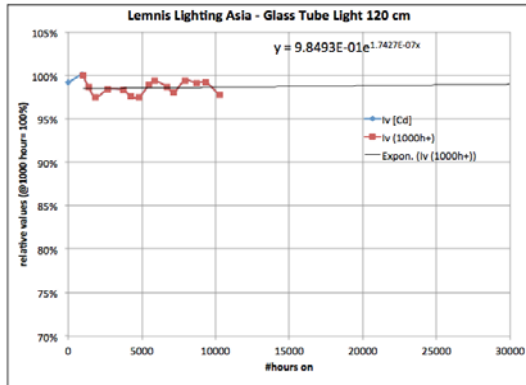


The Lighting Company

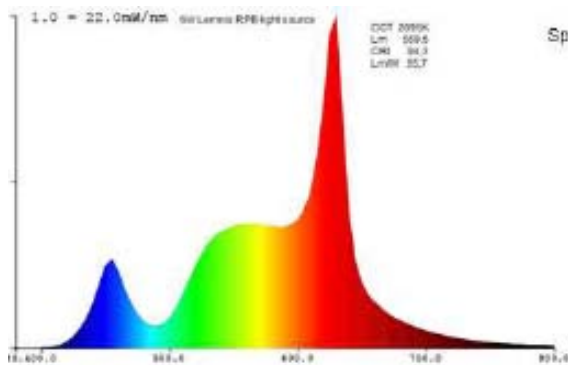
LED TUBE LIGHTING SERIES

TEST RESULTS

Olino Test Result @ 12,000hours



LEMNIS Light-source and Spectrum



ISOLUX TABLE (1200mm; 5000K)

m.	50%		C0-180: 120° C90-270: 101°	E (lux)	Luminaire Efficacy
	C0-180	C90-270			
0.25	0.86	0.61		10501	102 (lumen per watt)
0.5	1.73	1.22		2625	Half-peak diam C 0-180 3.45 x diameter (m)
1	3.45	2.44		656	Half-peak diam C 90-270 2.44 x diameter (m)
1.5	5.18	3.66		292	Illuminance
3	10.35	7.31		73	656 / distance ² (lux)
4	13.8	9.75	41	Total Output	2123 (lumen)
5	17.25	12.19	26		

E (lux) values are not accurate, when within 5 x 1036 mm (maximal luminous size, eventually diagonally measured)= 5180 mm. Within this distance from the lamp, the measured lux values will be less than the computed values in this overview as the measurements are then within the near field of the lamp.

DML GLOBAL RESOURCES SDN BHD (875817-D)

NO.43, JALAN BP 6/2, BANDAR BUKIT PUCHONG, 47100 PUCHONG, SELANGOR DARUL EHSAN, MALAYSIA.

TEL : 011 1533 2886 FAX: +603 8051 3783 WEBSITE: www.dgr.com.my

Email: sales@dgr.com.my

FLUORESCENT LIGHT



The Lighting Company

RECESSED MOUNT T5 FLUORESCENT FITTING

SPECIFICATION

Housing made of mild steel with 1.5MM thickness
Electrostatically coated with epoxy and /or polyster powder in white
Stove coated with high reflectivity white epoxy
Mirror louver of anodized aluminium
Ribbed cross blade of anodized aluminium in matt
G5 lamp holder made of polycarbonate & bronze
Twist-lock lamp holder for releable contact
Pre-connected with 105°C HR PVC wire
Connector made of nylon 3 way x 2.5 MM²
Copper, wedge anchor for 2x 2.5MM² earth wire
IP 20
Class 1



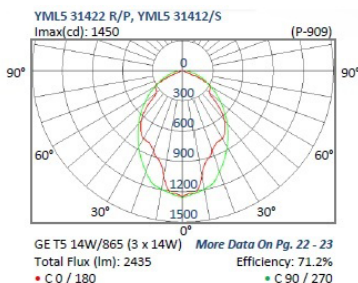
Designed, manufactured and complied with
MS:IEC 60598, MS:IEC 60400, MS:IEC 60998 AND IEC 61347

MODEL	TUBE(T5)	IMPERIAL APPROX	DIMENSION (MM)					
			L1	L2	W1	W2	H1	H2
MS/ST YML5 21412 R/P	2 x 14w	1' x 2'	604	575	304	250	60	54
MS/ST YML5 21422 R/P	2 x 14w	2' x 2'	604	575	604	550	60	54
MS/ST YML5 31422 R/P	3 x 14w	2' x 2'	604	575	604	550	60	54
MS/ST YML5 41422 R/P	4 x 14w	2' x 2'	604	575	604	550	60	54
MS/ST YML5 22814 R/P	2 x 28w	1' x 4'	1210	1181	304	250	60	54
MS/ST YML5 22824 R/P	2 x 28w	2' x 4'	1210	1181	604	550	60	54
MS/ST YML5 32824 R/P	3 x 28w	2' x 4'	1210	1181	604	550	60	54
MS/ST YML5 42824 R/P	4 x 28w	2' x 4'	1210	1181	604	550	60	54

DIMENSION , mm

Metric Size 1210mm x 304mm x60mm

PHOTOMETRIC DATA



Flux Out: 862.6 lm

(M)	Lux	CM
1	823	115
2	205	230
3	91	346
4	51	461
5	32	577

Height Angle: 60° Diameter

Note:

Testing environment temperature: 25 ± 2°C.

The above parameters are typical data; the actual parameters of each single product could differ from the typical data.

The data are subject to change without prior notice.

DML GLOBAL RESOURCES SDN BHD (875817-D)

NO.43, JALAN BP 6/2, BANDAR BUKIT PUCHONG, 47100 PUCHONG, SELANGOR DARUL EHSAN, MALAYSIA.

TEL : 011 1533 2886 FAX: +603 8051 3783 WEBSITE: www.dgr.com.my

Email: sales@dgr.com.my

FLUORESCENT LIGHT



The Lighting Company

RECESSED MOUNT T8 FLUORESCENT FITTING RHD 2424R

SPECIFICATION

Housing is fabricated from mild steel
Finished with powder electrostatically
Stove-coated with high reflectivity white epoxy
Lampholder of polycarbonate & bronze
Twist – lock lampholder for reliable contact
Pre- Connected with 105° HR PVC wire
Connecting devices of nylon 3 way x 2.5mm²
Copper, wedge anchor for 2 x 2.5mm² earth wire
Magnetic Ballast – input 220-240vac, 50 Hz
Acrylic diffuser of prismatic & linear pattern (PETG)
Polycarbonate end cap in white



Features:

Safe and easy to connect earth terminal with facilities for rod
Suspension
Degree of Protection : IP20
Colour: White

Ballast

Brand : Vitalite
Model : SLL 570
Type : T8 Magnetic Ballast
Output Wattage : 2 x 36W
Standard Compliance : MS
Operation Voltage : 240V / 50Hz
Quantity : 2

TECHNICAL DATA

Input Voltage (V) : 240 V
Nominal Wattage(W) : 83.8W
Watt Losses (W) : 11.8W
Current (A) : 0.362A
Power Factor (PF) : 0.954PF

Lamp

Brand : Toshiba
Model : FL36W/T8/ EX-D
Type / Material : T8 Fluorescent Lamp
Average Life (Hrs) : 18,000 Hrs
Lamp Wattage : 36W
Lamp Base : G13
Colour (K) : 6,500K
Colour Rendering Index(Ra) : 85 Ra
Initial Lumen (lm) / candela (cd) : 3,250 lm
Burning Position : Universal
Quantity : 2

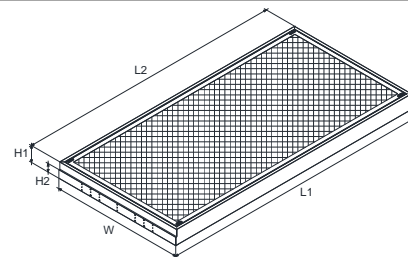
Standards:

Designed, manufactured and complied with :

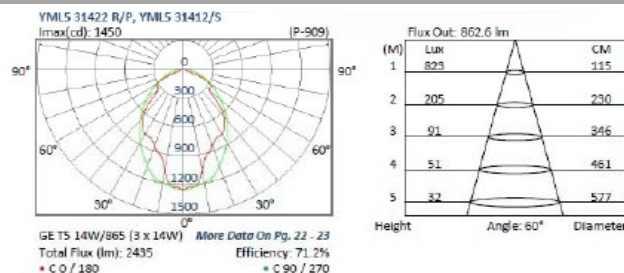
MS IEC 60598 - LUMINAIRES
MS IEC 60155 - GLOW STARTER
MS IEC 60400 - LAMPHOLDER ; STARTERHOLDER
MS IEC 60998 - CONNECTING DEVICES
MS IEC 61347 – MAGNETIC BALLAST

DIMENSION , mm

L1-1223 X L2-1213 X W1-604 X H1-70 X H2-37



PHOTOMETRIC DATA



DML GLOBAL RESOURCES SDN BHD (875817-D)

NO.43, JALAN BP 6/2, BANDAR BUKIT PUCHONG, 47100 PUCHONG, SELANGOR DARUL EHSAN, MALAYSIA.

TEL : 011 1533 2886 FAX: +603 8051 3783 WEBSITE: www.dgr.com.my

Email: sales@dgr.com.my

LED Linear Light



The Lighting Company

Linear LED LL 012

SPECIFICATION

Input Voltage: DC24V
Power: 12W
Color Temperature: 3,000K
Lifespan: 50,000 hours
Ambient Temperature: - 30°C - 50°C
IP Rate: IP65



DIMENSION , mm

Length: 1000mm
Width : 32mm
Height: 30.5mm



Note:

Testing environment temperature: 25±2°C.
The above parameters are typical data; the actual parameters of each single product could differ from the typical data.
The data are subject to change without prior notice.

DML GLOBAL RESOURCES SDN BHD (875817-D)

NO.43, JALAN BP 6/2, BANDAR BUKIT PUCHONG, 47100 PUCHONG, SELANGOR DARUL EHSAN, MALAYSIA.

TEL : 011 1533 2886 FAX: +603 8051 3783 WEBSITE: www.dgr.com.my

Email: sales@dgr.com.my